

**Rail Services International
Austria GmbH**
Domaniggasse 2, A-1100 Wien

T: +43 (0)1 617 77 71
F: +43 (0)1 617 77 71-28
E: info@railsi.at
www.railsi.at

Item description

Connection box LHD, pre-assembled including electrical resistance and test key

Type	Art.No.
Connection Box LHD	59.770.55 a/b

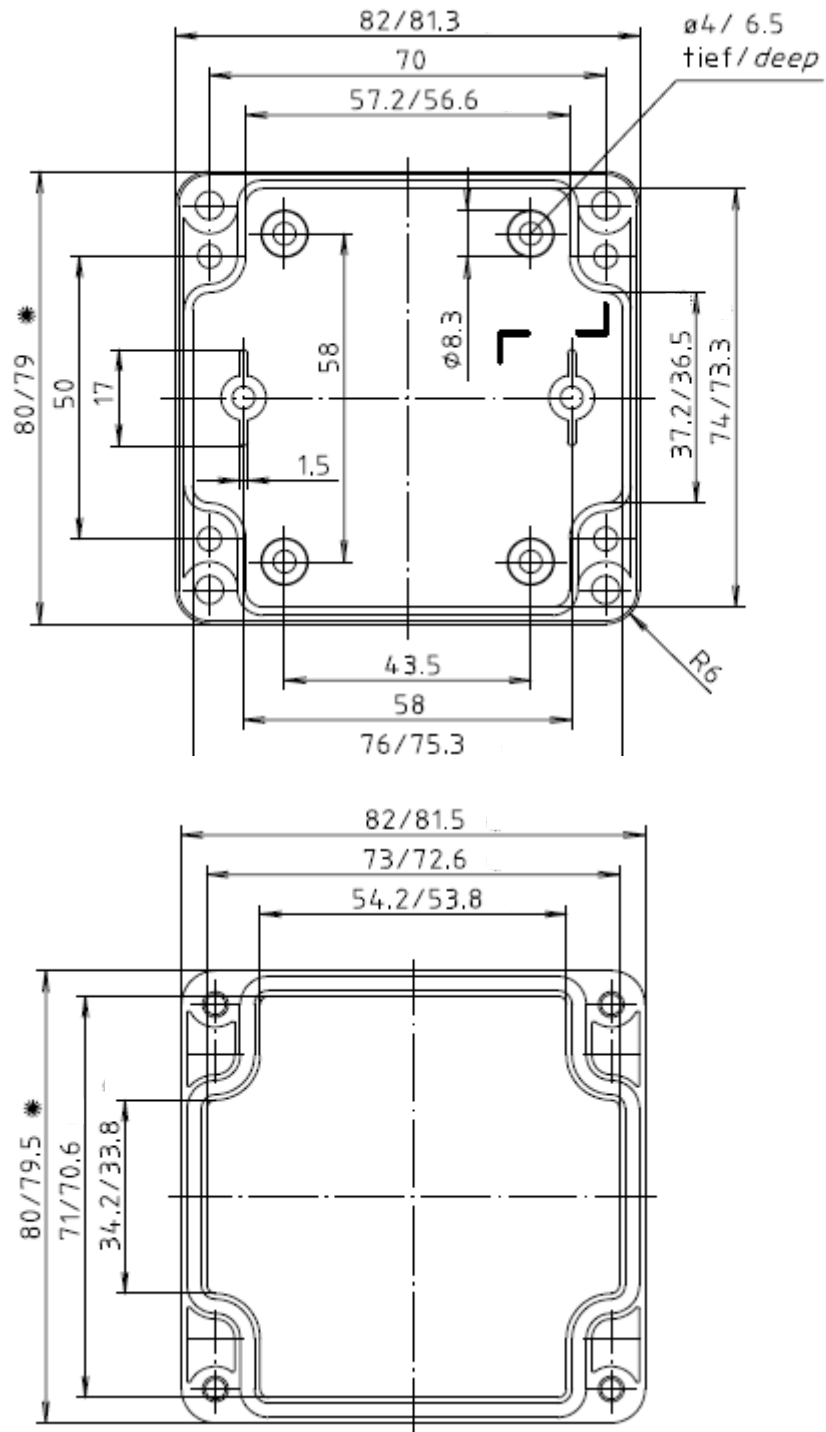
Description

- Connection box for the connection of a linear heat detector with a higher ranking control
Connector label „Control Equipment“ (2-pole)
Connector label „LHD In / Out“ (2x2-pole)
- Pre-installed with 1kohm resistance and depending on the system requirements
with 10kohm (59.770.55 a) or
with 20kohm (59.770.55 b) parallel resistance
- Internal screw connection terminal blocks for wire sizes from 0,2mm² to 4mm², so stabile and easy to wire
- Including test key („Test“) for a convenient verification of the alert function by simulating a short circuit on the linear heat detector
- Prepared for the stabile vertical or horizontal assembling by customers connection geometry via 4 screws (not included)
- Timeless, elegant design



Technical data

Relative humidity:	up to 95%
Colour:	light grey, similar RAL 7035
Dimensions (LxWxH):	130mm x 82mm x 50mm
Weight:	232 g
Protection class:	IP65
Classification DIN EN45545:	HL3, R22
Housing material:	PC (V-0 / UL 94)
Temperature range (operation):	-20°C ... +55°C



* total length including cable gland 130mm (installation place to consider)